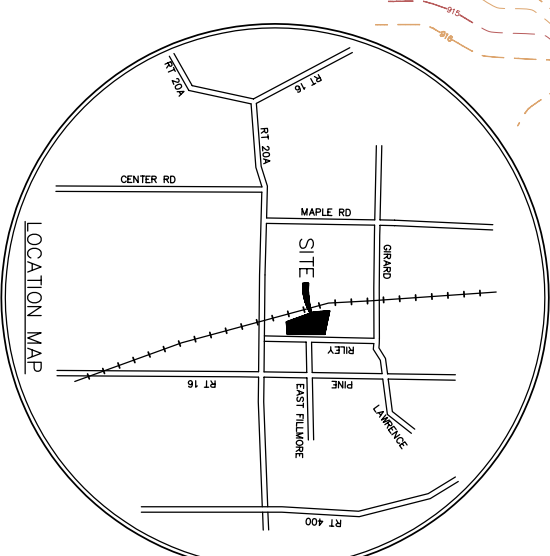


PLANTING SCHEDULE

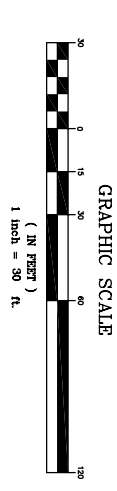
SYMBOL	KEY	QTY.	BOTANICAL NAME	COMMON NAME	SIZE	ROOT
	QT	6	QUERCUS TRUNCATINUS	HONEY LOCUST	2"-2 1/2"	B & B
	TC	6	TILIA CORODATA	GREENSPRING LINDEN	2"-2 1/2"	B & B
	EA	12	EUONYMUS ALATUS	BURNING BUSH	2 1/2" - 3"	B & B

NOTE:
LANDSCAPING PLAN LAYOUT AND PLANTING SCHEDULE
PREPARED BY:
MURRAY BROTHERS
NURSERIES AND GARDEN CENTRE, INC.
ORCHARD PARK, NY 14127



- NOTES:
1. PROPOSED SIGN TO BE MOUNTED ON EAST FACE OF BUILDING.
 2. FLOODPLAIN ELEV. 917.00
 3. CHAINLINK FENCE SHALL BE CONSTRUCTED ALONG THE WESTERLY RAILROAD LEASE BOUNDARY.
 4. STORMWATER DISCHARGE SHALL COMPLY WITH NYSDEC PHASE II REQUIREMENTS.

PROJECT DESCRIPTION: COMMUNITY BASED ICE RINK
 NAME OF APPLICANT: AURORA ICE ASSOCIATION, INC.
 CONTACT: SAM MILLER 716-652-9560
 ADDRESS OF APPLICANT: 681 MAIN ST. EAST AURORA, NY 14052
 BRG. BUILDING SIZE: 66,919 SQ. FT.
 MAIN LEVEL: 6,153 SQ. FT.
 UPPER LEVEL: 73,072
 TOTAL: 130 (COMBINED SPACES)
 PARKING SPACES: 130 (COMBINED SPACES)



- EROSION CONTROL:
- SF SALT FENCE
 - STORM INLET
 - SEDIMENT TRAP
 - STORM OUTLET
 - SEDIMENT TRAP
- LEGEND ~
- HOLLOW LIGHT WITH BASE
 - HOLLOW LIGHT MOUNTED
 - INVAE LIGHT MOUNTED
 - INVAE LIGHT WITH BASE
 - INVAE LIGHT WITH BASE (DOUBLE PROFILE)

REVISIONS

NO.	BY	DATE	COMMENT
1	VBS	2-19-07	RESPONSE TO GENERAL AND CONTOURS
2	VBS	3-7-07	LANDSCAPING REVISIONS
3	VBS	6-14-07	ADDED CONICAL IRONM.
4	VBS	6-28-07	BUILDING ADJUST AS FIELD AREA
5	VBS	7-16-07	MISC. REVISIONS
6	VBS		

NUSSBAUMER & CLARKE, INC.
 A CORPORATION REGISTERED TO PRACTICE
 PROFESSIONAL ENGINEERING & LAND SURVEYING
 IN THE STATE OF NEW YORK
 CERTIFICATE NO. _____

UNAUTHORIZED ALTERATION
 OR ADDITION TO THIS
 ENGINEERING DRAWING IS
 A VIOLATION OF SECTION
 7209, PROVISION 2 OF
 THE NEW YORK STATE
 EDUCATION LAW.

ANDRUS
 ARCHITECTURE
 500 AVENUE OF THE STARS - SUITE 800
 ROCKY HILL, CT 06154
 PHONE: 860.265.8800
 FAX: 860.265.8801
 WEBSITE: andrusarchitecture.com



BEFORE YOU DIG, DRILL OR BLAST IN WESTERN OR CENTRAL
 NEW YORK, CALL DIG SHEET NEW YORK 1-800-962-7802.

SHEET NO. 1
 AURORA ICE ASSOCIATION, INC.
 VILLAGE OF EAST AURORA
 PRELIMINARY SITE PLAN